



Incident Command System

NIMS / ICS OVERVIEW



Why ICS?

- **It's flexible and scalable.**
- **Provides chain and unity of command.**
- **Limits span of control**
- **It can include all responders from within own agency or Host Nation**
- **Gives clear direction to entire organization.**



ICS Flexibility

- **Primary ICS Functions**

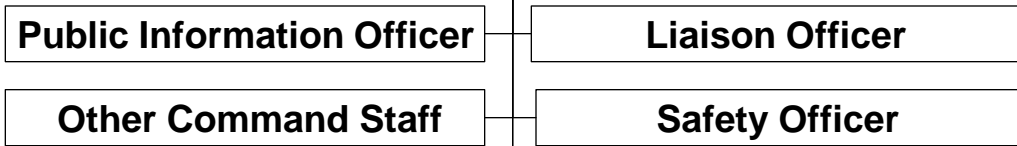




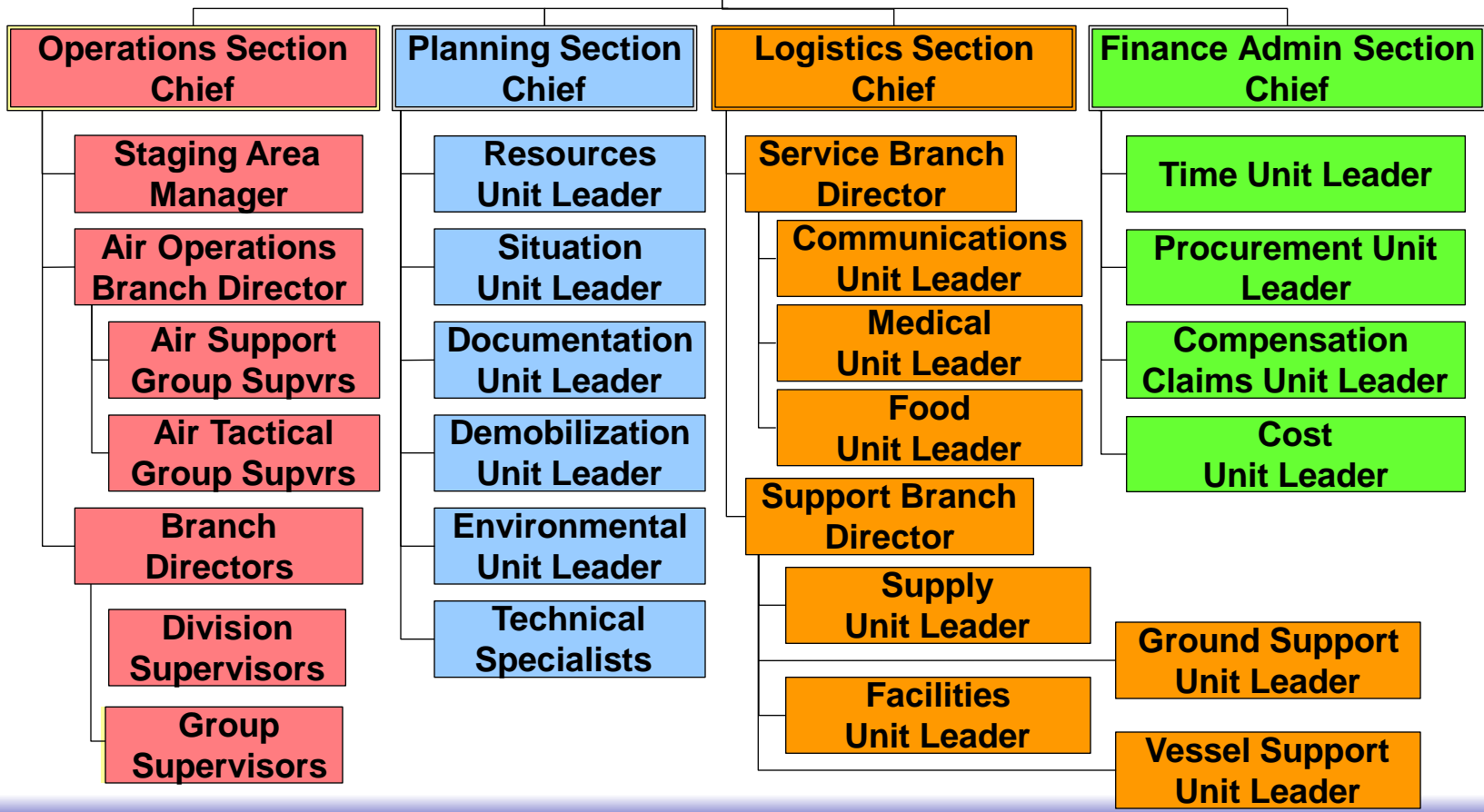
ICS Scalability

IC/UC

Command Staff



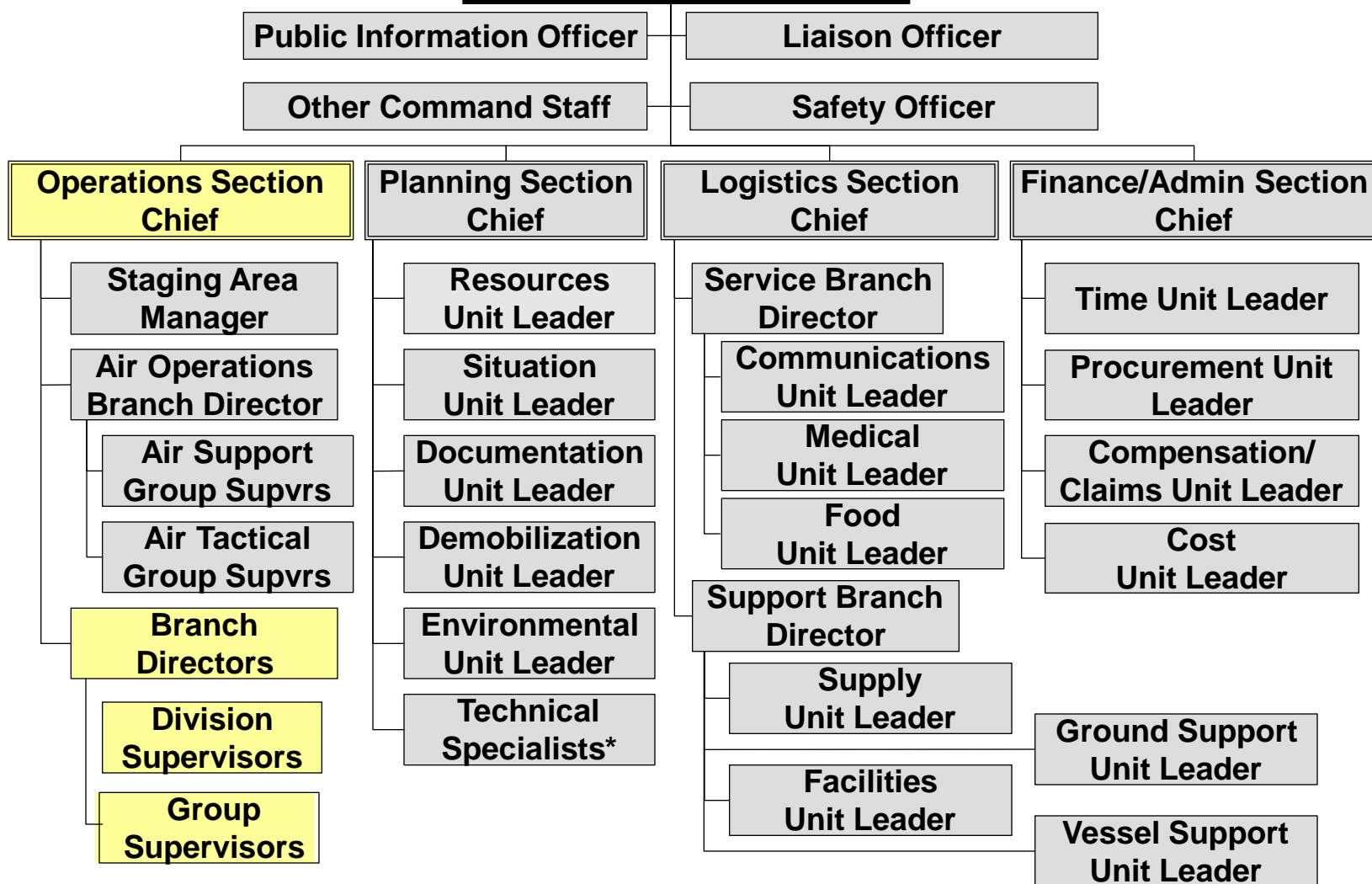
General Staff





Unity & Chain of Command

IC/UC





Single Command

- **Initial response**
 - **Command assumed by most qualified on-scene authority**
- **Expanding incident**
 - **Command passed to best qualified on-scene officer**
- **Long-term extended operations**
 - **Command passed to higher ranking, better qualified authority**



Unified Command

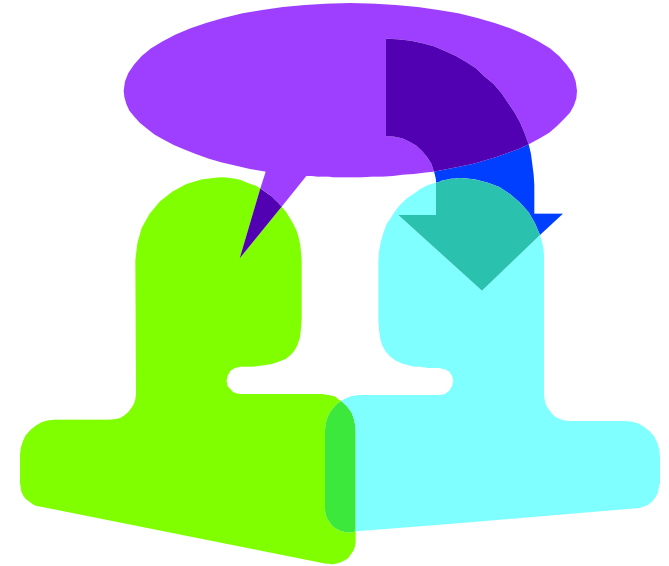
- **Can be departments within own agency or US Navy and Host Nation(s)**
- **Co-management of incident**
- **Overlapping jurisdictional / agency responsibilities**
- **Coordination of efforts**



Transfer Command

- **Applies to:**
 - **Single Command**
 - **Unified Command**

- **Should be:**
 - **Smooth**
 - **Overlapping**
 - **Communicated**





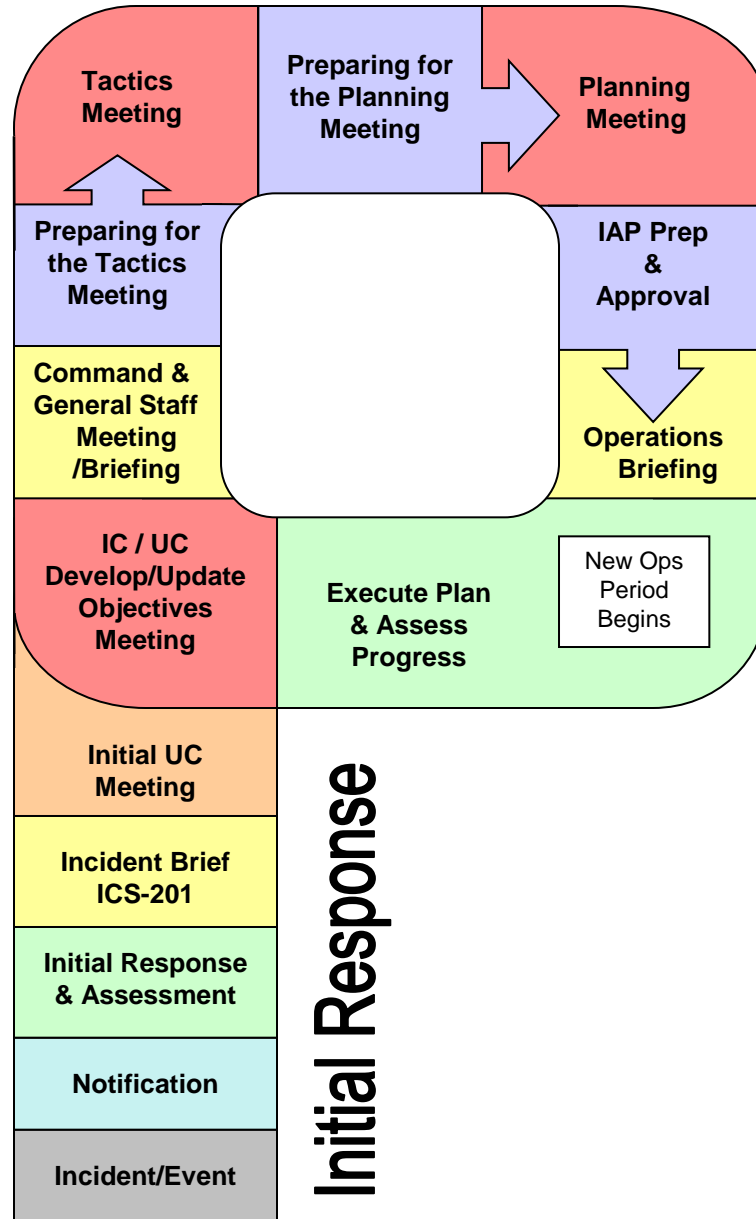
ICS Overview

- **Management by Objectives**
- **Documentation**
- **Communication**
 - **Internal**
 - **External**
 - **Formal/Informal**
- **Resource Tracking**



ICS Overview

Clear direction and path to ongoing planning



Initial Response



Your System

- We need a better understanding of our HN and partner Incident Management Systems
- Similar?
- Flexible?
- What is the same?
- What is different?



Questions?

