



Middle East Updates *2015 onwards*

Who we are



- ▶ Largest international industry funded cooperative
- ▶ Owned by major oil and gas production / transportation companies
- ▶ Train and respond effectively anywhere in the world

Our global capability

➤ 7 Bases: Bahrain // Brazil* // Norway* // Singapore* // South Africa* // United States // United Kingdom

**Specialised bases for Subsea Well Intervention Services*

➤ 4 Regional Offices: London, UK (Registered Office) // Aberdeen, UK // Jakarta, Indonesia // Houston, USA



Bahrain Base Main Activities

- ▶ Exercises & Spills.
- ▶ Training Courses.
- ▶ New Members.
- ▶ Projects.
- ▶ Conferences.
- ▶ Pallets and Equipment commissioning.
- ▶ CSR.
- ▶ Hot weather working procedures improvements.

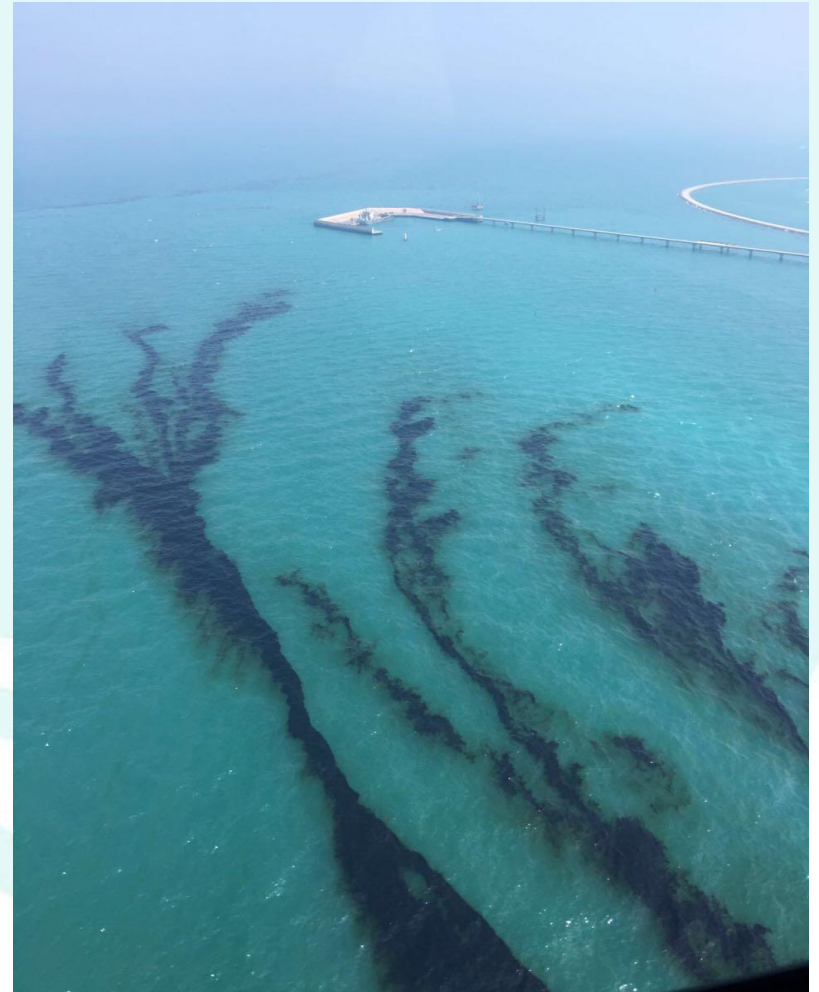
Response Incidents 2016 & 2017 (ME Region)

- ▶ Participant Member Response for well control incident in Arabian Gulf (confidential)
- ▶ Historic Abandoned well condensate blowout (Confidential)
- ▶ Various small vessel sinkings
- ▶ Pipeline rupture – Arabian Gulf (confidential)
- ▶ Unknown source release of crude oil in Arabian Gulf
5x5 Technical advisor activations(confidential)
- ▶ Equipment & Personnel support to multiple global incidents (confidential)

Response Incidents 2016 & 2017 (ME Region)



Response Incidents 2016 & 2017 (ME Region)



Response Incidents 2016 & 2017 (ME Region)



Exercises

- ▶ Monthly Deployment Exercises With members in Bahrain:
 - Shoreline Exercises



Exercises

- ▶ Monthly Deployment Exercises With members in Bahrain:
 - Offshore Exercises



Exercises

– Offshore Exercises



Exercises

- ▶ Monthly Deployment Exercises With members in Bahrain:
 - Fast water booming Exercises



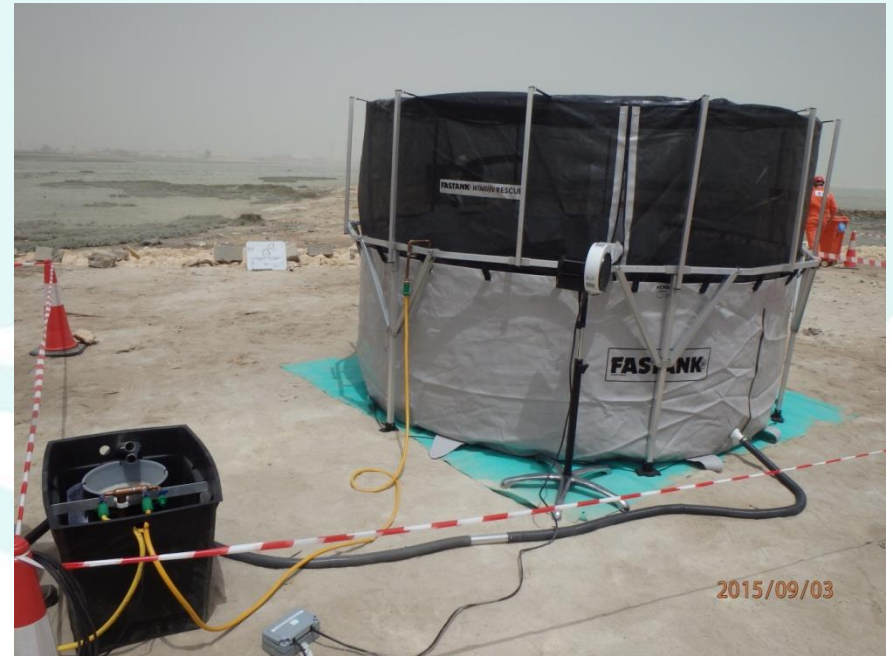
Exercises

- Fast water booming Exercises & Rope ancillaries Training session.



Exercises

- ▶ Monthly Deployment Exercises With members in Bahrain:
 - Wildlife exercises & SRP Training.



Exercises

- Wildlife Exercises & SRP Training.



Exercises

- Major Deployment Exercises With members
 - Hot weather / Real oil Exercise



Exercises

- Major Deployment Exercises With members
 - Hot weather / Real oil Exercise



Exercises

- ▶ Quarterly readiness exercise with member in Ras- Tanura



Exercises

► ICS Tabletop Annual Exercise with BAPCO .



Exercises

- ICS Tabletop Annual Exercise with KNPC (Kuwait National Petroleum), KOC (Kuwait Oil Company) and KOTC (Kuwait Oil Tanking Company) at Mina Al Ahmadi.



Exercises

- ▶ TA Exercises with members in the GCC region:
 - Mubadala – Abu Dhabi.
 - Oil Tanking/Star energy - Dubai
 - KPC – Kuwait.



Exercises

- ▶ Physical Logistical Mobilisation exercises for members in the region:
 - Saudi ARAMCO.
 - Saudi Arabian Chevron in Kuwait.
 - Dubai Petroleum.
- ▶ Internal No Notice Drills:
 - Exercise Ecuador.
 - Leviathan 2 (Global)
 - Quarterly mobilisation drill's



Preparedness Delivery

- ▶ IMO3 Management course for RECSO members.
- ▶ Equipment Capability Review Red Sea & Arabian Gulf (Member company)
- ▶ KOC Capability Review
- ▶ OSCP and TRP renewal for DPE
- ▶ 1 x Member company secondee from OSRL
- ▶ BAPCO OSCP updates and ICS training



Training Courses

- ▶ Oil spill familiarisation - 1Day course for ports and Harbors personnel.



Training Courses

► For External Manpower Contractor (BMDS)



RECSO Team Training

- ▶ RECSO Team (the Regional Clean Seas Organisation) joined OSRL for three days training in June 2015. As new joiners to RECSO, we were asked to familiarise them with what we do, how we operate in the Middle East and provide a wider picture of the oil industry as a whole.



New Members


- ▶ Qatar Petroleum signed with OSRL as a Participant member on April 2015.
- ▶ Dolphin Energy signed as associate member Feb 2016



Projects

- ▶ DPE OSCP reviewing and updating including conducting surveys and Tactical Response Plan of key sensitivities along the Dubai coastline

DUBAI OIL SPILL CONTINGENCY PLAN : TACTICAL RESPONSE GUIDE




OVERVIEW AREA 'E': Area 'E' extends from Jebel Ali Port boundaries to the trunk of Jumeirah Palm / Jumeirah beach intersection. Significant sensitivities are exposed in this section. **[Priority 1]**

Section 1 – Beach: The foreshore exhibits common characteristics with multiple access routes for mechanised equipment such as graders. It is impracticable to stop oil migrating into the palm from the trunks direction, but it is thought this would be minimal due to the complexity of the basis of design and common currents in the area (more detail in TRG AREA 'F').

Section 2 – Marina: At the most North Easterly point in Area 'E' is Dubai Marina – the largest man made marina in the world. This has two routes of entry, rock armour berms extend outwards into the sea with vertical concrete sides inside the marina.

Section 3 – Water Intakes: All the water intakes supporting Dubai (Power, Desalination and industry) are located around 700m from the beach and found generally in a water depth of 7m, elevated 3m off the bottom.



TACTICS OVERVIEW:

Area 'E' contains the priority sensitivities (water intakes) along the Dubai coast. It is imperative these are prioritised in response efforts. Research shows dispersant application is feasible (suggested outside the perimeter of the palms) as water exchange and direction is favourable as well as expected sufficient water depth for successful operations (NEBA). Inside of this area, attention should be on 'offshore containment and recovery' to limit shoreline impact. Protection booming should be carried out in the Marina for any remaining free floating oil and beach cleaning activities undertaken. Additional tactical information is found on the following pages.

TOTAL RESOURCES REQUIRED FOR AREA:

SUM OF INDIVIDUAL SECTIONS + OVERALL TACTICS – SUPPORTING / DUPLICATED OR OTHERWISE USED EQUIPMENT WHICH CAN BE UTILIZED AT THE NEXT OPERATIONAL SITE (I.E. BOATS)

DATE: JULY 2009 REV: 1.0 LOCATION: DUBAI MARINA

TACTICAL RESPONSE GUIDE : AREA 'E' OVERVIEW

Conferences

► Conference Support:

OSRL Bahrain were invited to the annual Kuwait International HSE Conference & Exhibition (KIHSE) on the 16th and 17th Feb. At the request of the Kuwait National Oil Company (KNPC) and Kuwait Oil Company (KOC), OSRL both exhibited and presented at the Conference. OSRL also attended the ISPO conference by KOC in Nov 2015 & Petro Environment in 2016.



Community Support & Relations

- Polytechnic university students summer training.



- RECSO Port cleanup day.
- BAPCO HSE Awareness Day



Visit's and Audits

- DNV ISO
- BP, Shell Saudi Arabia, Shell OSEC, Maersk, Saudi Aramco, RECSCO, BAPCO, BP

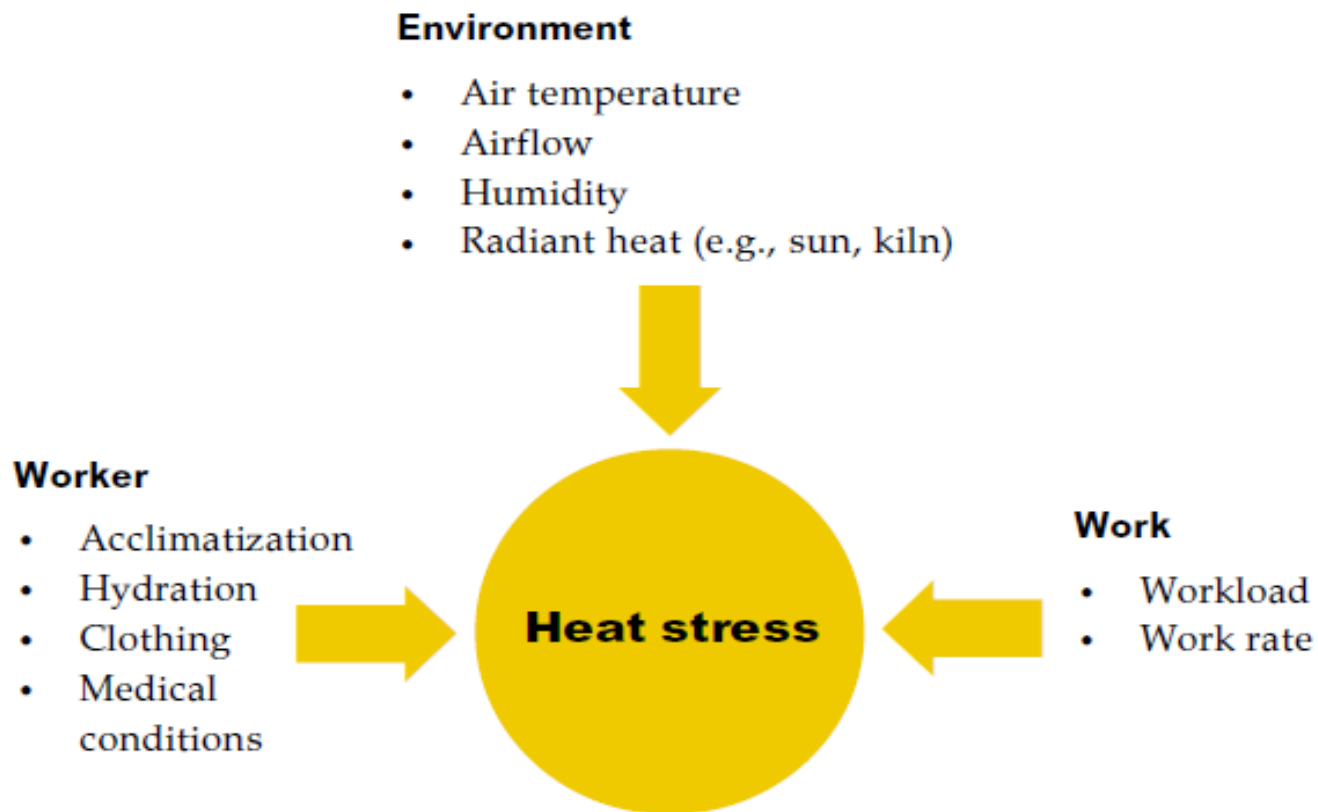


Pallets & Equipment Commissioning

- ULD Command Centre Pallet.
- Offshore ULD pallet.
- Spill Ancillaries Box.
- Fast Water boom Stillage.
- SG Boom Pallet.
- SS Boom Pallet.
- Offshore Ancillaries Pallet.
- Low Pressure Flushing Box.
- Inshore Ancillaries Pallet.
- River Damming Stillage.

Hot Weather Procedures Improvements

Primary factors contributing to heat stress





Thank You & any questions?

Middle East Team

Staying in touch

www.oilspillresponse.com

Subsea Well Intervention Service

- ▶ subseaservices@oilspillresponse.com
- ▶ <http://swis-appreciation.cotoco.com/>

Training courses

- ▶ www.oilspillresponse.com/training
- ▶ training_uk@oilspillresponse.com
- ▶ training_sg@oilspillresponse.com

Find us on



- ▶ www.facebook.com/OilSpillResponseLimited
- ▶ www.linkedin.com/company/oil-spill-response-ltd
- ▶ www.youtube.com/user/OilSpillResponseLtd
- ▶ www.twitter.com/oilspillexperts